

32" E-Paper Signage (Indoor) – Finish Good

Display Technical Specifications

Model	C31Q17 (C31Q16)	M31Q17 (M31Q16)
Active Area	32"	32"
Screen Technology	E Ink Color	E Ink Monochrome
Resolution	1280 x 720	2560 x 1440
Color	4096 color	16 Gray Level (monochrome)
Contrast Ratio	13:1	12:1
Flash Size	eMMC 8G	
DDR	DDR 2 LP 512MB	
G Sensor	For Portrait Mode & Landscape Mode	
Key	Power on/off. Reset	
Connector	Micro USB, SD Card Slot, DC In, RJ45, SIM Card	
Connectivity	Wi-Fi, BT4.1, 4G LTE (C31Q16)	
Storage	External SD card	
Battery(Optional)	Detachable Rechargeable lithium battery 10,400 mAh	
OS	Android 4.4 or up	
Type	DC (12V/4A)	
Bezel Width	5.7mm/5.7mm/5.7mm/15mm (Left/Right/Top/Bottom)	
Wall Mount	200 x 200mm	
External Dimension	703.6 x 410.5 x 8.8mm (Board Area 22.5) (With 2mm tempered Glass)	
Weight	6.5kg	
Operating temperature	0°C~50°C(4bit image)	



32" E-Paper Signage (Outdoor) – Finish Good

Display Technical Specifications

Model	M31Q37 (M31Q36)	C31Q37 (C31Q36)
Active Area	32"	32"
Screen Technology	E Ink Monochrome	E Ink Color
Resolution	2560 × 1440	1280 x 720
Color	16 Gray Level	4096 color
Contrast Ratio	12:1	13:1
Flash Size	eMMC 8G	
DDR	DDR 2 LP 512MB	
G Sensor	For Portrait Mode & Landscape Mode	
Key	Power on/off. Reset	
Connector	Micro USB, SD Card Slot, DC In, Mini SIM Card Connector, RJ45	
Connectivity	Wi-Fi, BT4.1, 4G LTE (M31Q36)	
Storage	External SD card	
OS	Android 4.4 or up	
Type	DC (12V/4A)	
Bezel Width	21.0/21.0/21.0/21.0mm (Left/Right/Top/Bottom)	
Mounting	Pipe Clamp (φ70mm~100mm)	
External Dimension	781 x 479.4 x 37 mm (With 5mm tempered Glass)	
Weight	15.3Kg	
IP & IK Rated Enclosure	IP66 & IK07	
Operating temperature	0°C ~70°C (4bit image), -20°C ~0°C (1bit image)	



13.3" E-Paper Signage (Outdoor) – Finish Good

Display Technical Specifications

Model	M22Q37(M22Q36)
Active Area	22"
Screen Technology	E Ink Monochrome
Resolution	1200 × 3200
Color	16 Gray Level
Contrast Ratio	12:1
Flash Size	eMMC 8G
DDR	DDR 2 LP 512MB
G Sensor	For Portrait Mode & Landscape Mode
Key	Power on/off. Reset
Connector	Micro USB, SD Card Slot, DC In, Mini SIM Card Connector, RJ45
Connectivity	Wi-Fi, BT4.1, 4G LTE (M22Q36)
Storage	External SD card
OS	Android 4.4 or up
Type	DC (12V/4A)
Bezel Width	21.0/21.0/21.0/21.0mm (Left/Right/Top/Bottom)
Mounting	Pipe Clamp (φ70mm~100mm)
External Dimension	651.6 x 305.6 x 39.2 mm(With 5mm tempered Glass)
Weight	8.8kg
IP & IK Rated Enclosure	IP66 & IK07
Operating temperature	0°C ~70°C (4bit image), -20°C ~0°C (1bit image)

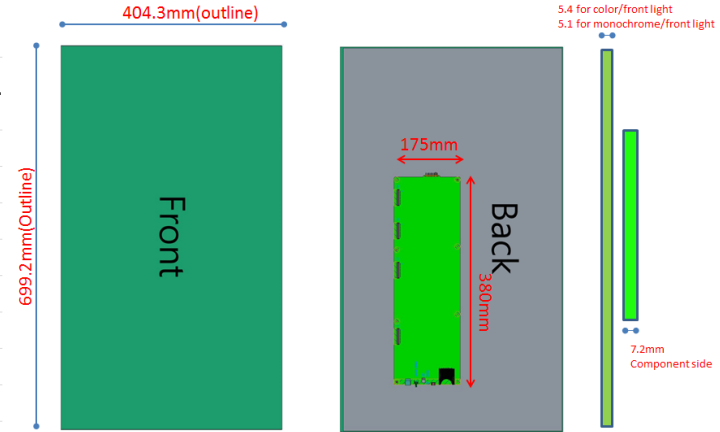


32" EPD Signage (Indoor) – Semi Finish

Display Technical Specifications

Model	C31QA7 (C31QA6)	M31QA7 (M31QA6)
Active Area	32"	32"
Screen Technology	E Ink Color	E Ink Monochrome
Resolution	1280 x 720	2560 x 1440
Color	4096 color	16 Gray Level (monochrome)
Contrast Ratio	13:1	12:1
Flash Size	eMMC 8G	
DDR	DDR 2 LP 512MB	
G Sensor	For Portrait Mode & Landscape Mode	
Key	Power on/off. Reset	
Connector	Micro USB, SD Card Slot, DC In, RJ45, SIM Card	
Connectivity	Wi-Fi, BT4.1, 4G LTE (C31QA6)	
Storage	External SD card	
Battery(Optional)	Detachable Rechargeable lithium battery 10,400 mAh	
OS	Android 4.4 or up	
Type	DC (12V/4A)	
Bezel Width	--	
Wall Mount	--	
External Dimension	699.2 x 404.3 x 3.1mm(3.4 for color), Board Size 175X380mm	
Tempered Glass	2mm	
Operating temperature	0°C~50°C (4bit image)	

32" Indoor Semi-Finish



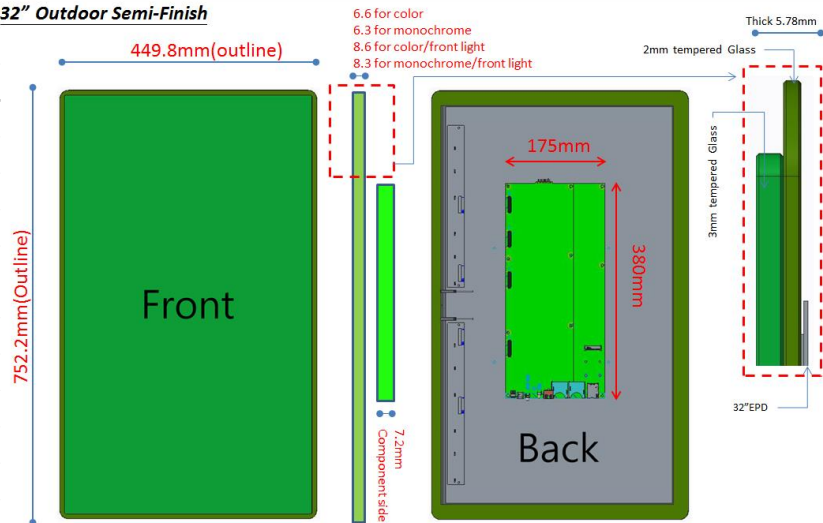
2mm tempered AR glass with optical bonding

32" E-Paper Signage (Outdoor) – Semi Finish

Display Technical Specifications

Model	M31QC7 (M31QC6)	C31QC7 (C31QC6)
Active Area	32"	32"
Screen Technology	E Ink Monochrome	E Ink Color
Resolution	2560 x 1440	1280 x 720
Color	16 Gray Level	4096 color
Contrast Ratio	12:1	13:1
<hr/>		
Flash Size	eMMC 8G	
DDR	DDR 2 LP 512MB	
G Sensor	For Portrait Mode & Landscape Mode	
Key	Power on/off. Reset	
Connector	Micro USB, SD Card Slot, DC In, Mini SIM Card Connector, RJ45	
Connectivity	Wi-Fi, BT4.1, 4G LTE (M31QC6)	
Storage	External SD card	
OS	Android 4.4 or up	
Type	DC (12V/4A)	
Bezel Width	--	
Wall Mount	--	
<hr/>		
External Dimension	752.2 x 449.8 x 6.3 mm(6.6 for color), Board Size 175X380mm	
Tempered Glass	5mm	
Operating temperature	0°C~65°C(4bit image), -15°C~0°C (1bit image) – For Monochrome ; 0°C~50°C(4bit image) for Color	

32" Outdoor Semi-Finish



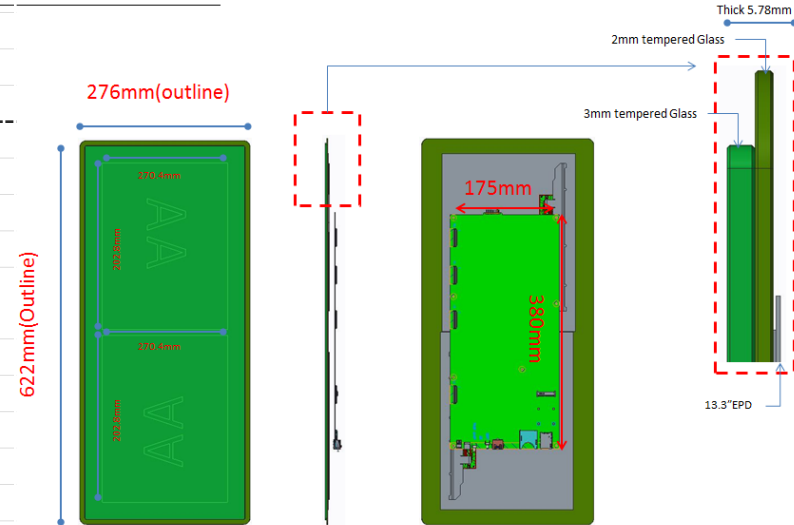
5mm tempered AR glass with optical bonding

13.3" E-Paper Signage (Outdoor) – Semi Finish

Display Technical Specifications

Model	M22QC7(M22QC6)
Active Area	22"
Screen Technology	E Ink Monochrome
Resolution	1200 × 3200
Color	16 Gray Level
Contrast Ratio	16:1
Flash Size	eMMC 8G
DDR	DDR 2 LP 512MB
G Sensor	For Portrait Mode & Landscape Mode
Key	Power on/off. Reset
Connector	Micro USB, SD Card Slot, DC In, Mini SIM Card Connector, RJ45
Connectivity	Wi-Fi, BT4.1, 4G LTE (M22QC6)
Storage	External SD card
OS	Android 4.4 or up
Type	DC (12V/4A)
Bezel Width	--
External Dimension	622 x 276 x 6.3 mm (6.6mm for color)(With 5mm tempered Glass)
Tempered Glass	5mm
Operating temperature	0°C~65°C(4bit image), -15°C~0°C (1bit image)

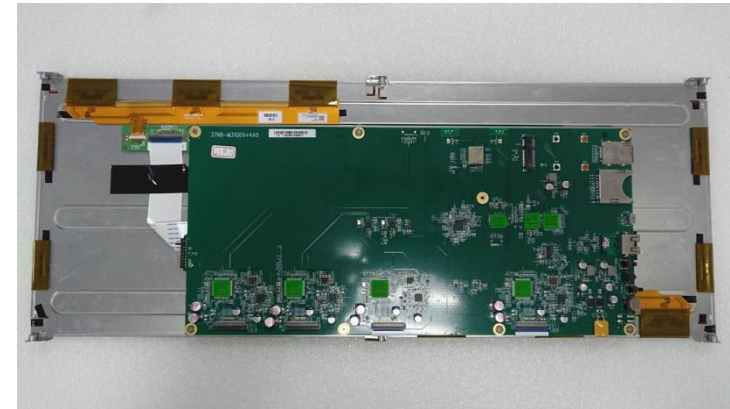
13.3"x2 Indoor Semi-Finish



13.3" E-Paper Signage (Indoor) – Semi Finish

Display Technical Specifications

Model	M22QS7(M22QS6)
Active Area	22"
Screen Technology	E Ink Monochrome (Flexible EPD)
Resolution	1200 × 3200
Color	16 Gray Level
Contrast Ratio	12:1
Flash Size	eMMC 8G
DDR	DDR 2 LP 512MB
G Sensor	For Portrait Mode & Landscape Mode
Key	Power on/off. Reset
Connector	Micro USB, SD Card Slot, DC In, Mini SIM Card Connector, RJ45
Connectivity	Wi-Fi, BT4.1, 4G LTE (M22QS6)
Storage	External SD card
OS	Android 4.4 or up
Type	DC (12V/4A)
Bezel Width	--
External Dimension	584.2 x 227.5 x 22.63 mm (No Glass)
Weight	--
Operating temperature	0°C~50°C



Driving Board Main Function

